

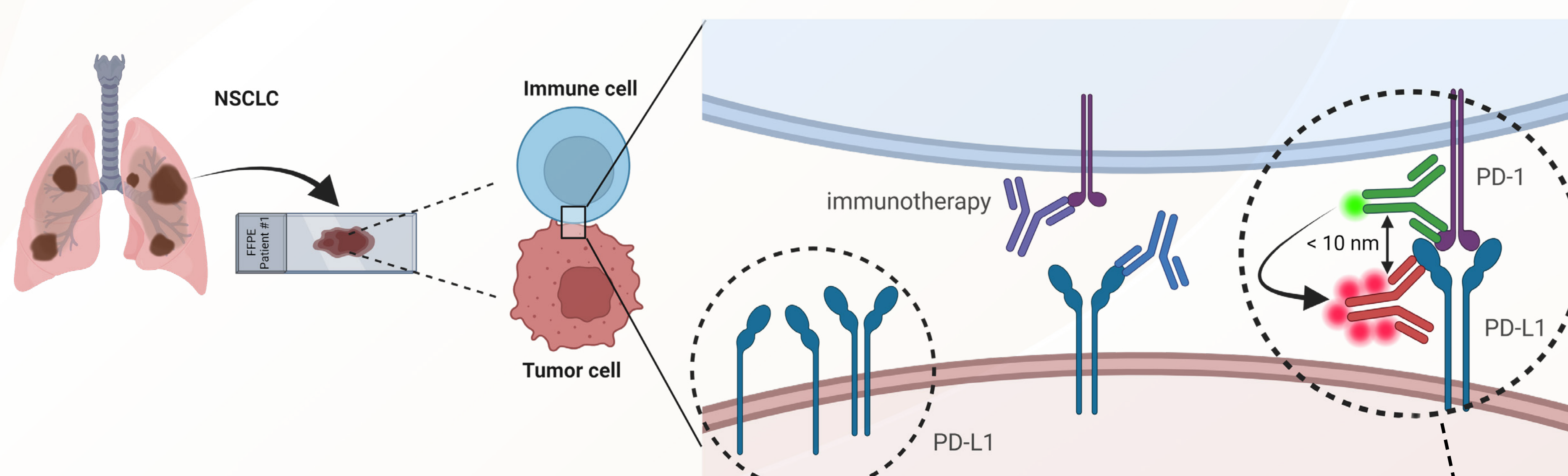
# ADVANCE TRANSLATIONAL RESEARCH BY QUANTIFYING PROTEIN FUNCTIONS IN TISSUE WITH QF-PRO®

Elena Castellano<sup>1</sup>, Cristina Cacho-Navas<sup>1</sup>, Juan Gumuzio<sup>1</sup>, James Miles<sup>1</sup>, Fernando Aguirre<sup>1</sup>, Peter J Parker<sup>1,2,3</sup>, Veronique Calleja<sup>1</sup>

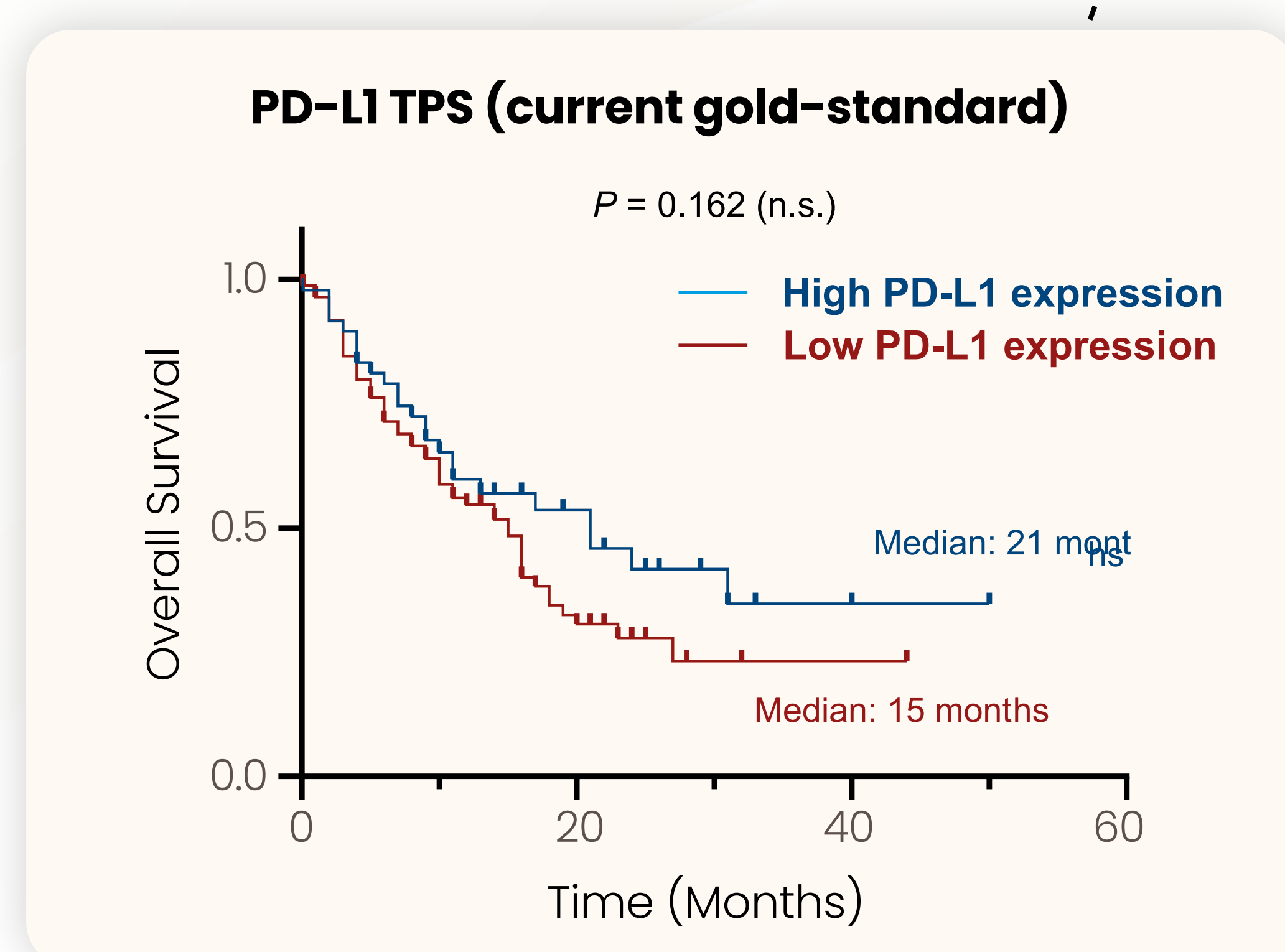
<sup>1</sup>HAWK Biosystems, Astondo Bidea 612, Science and Technology Park of Bizkaia, Spain; <sup>2</sup>School of Cancer and Pharmaceutical Sciences, Kings College London, United Kingdom; <sup>3</sup>Francis Crick Institute, 1 Midland Road, London, United Kingdom.

## Overcoming the lack of predictive biomarkers with QF-Pro®

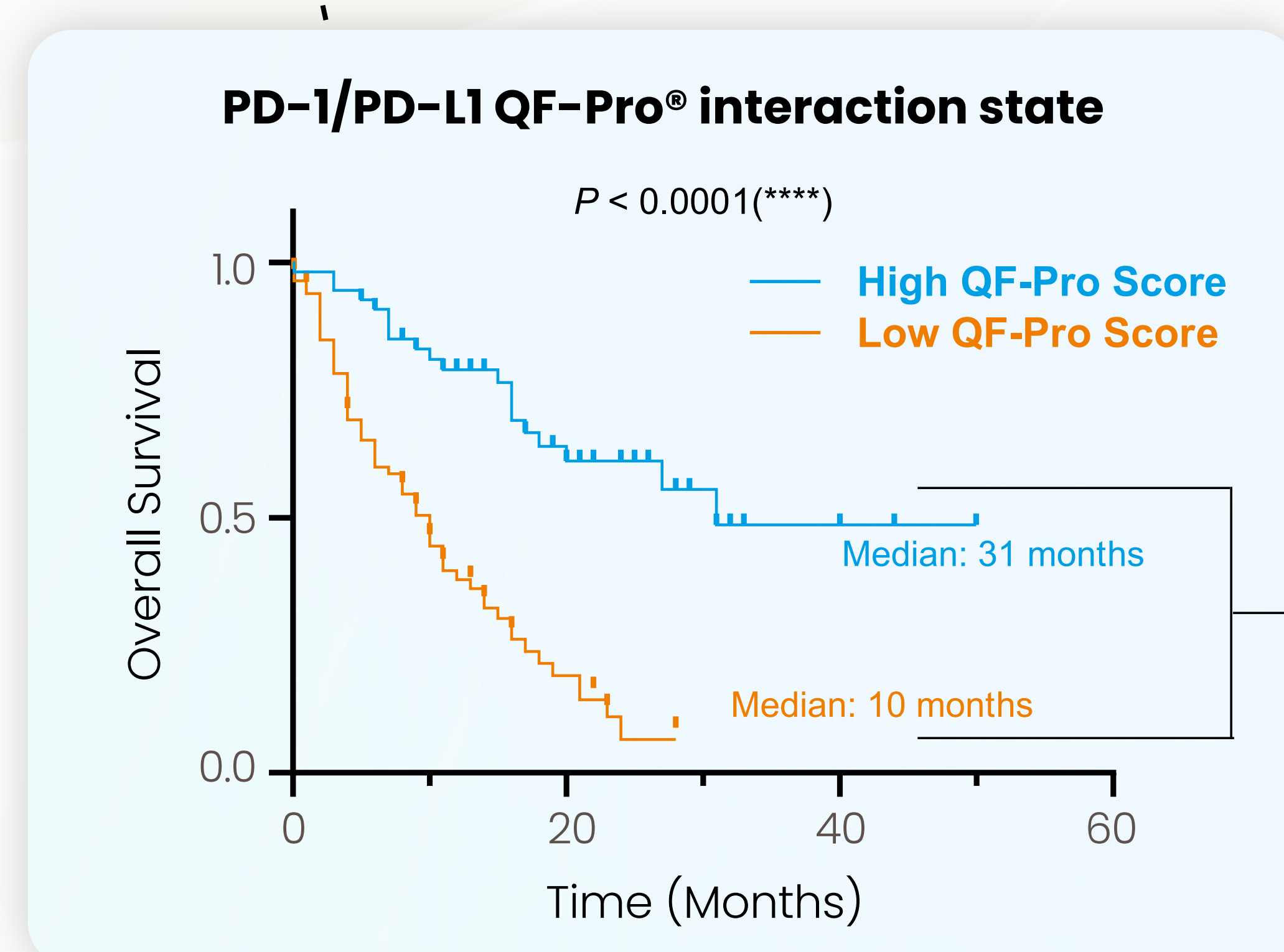
PD-1/PD-L1 interaction state is highly predictive of immunotherapy response



- QF-Pro® is an enhanced FRET-FLIM-based technology.
- Compatible with current FFPE samples established workflow.
- Proven to determine clinical cut-off value for stratifying patients for treatment.



QF-Pro® highly predicts response to immunotherapy



Clinical cut-off  
**2.127%**

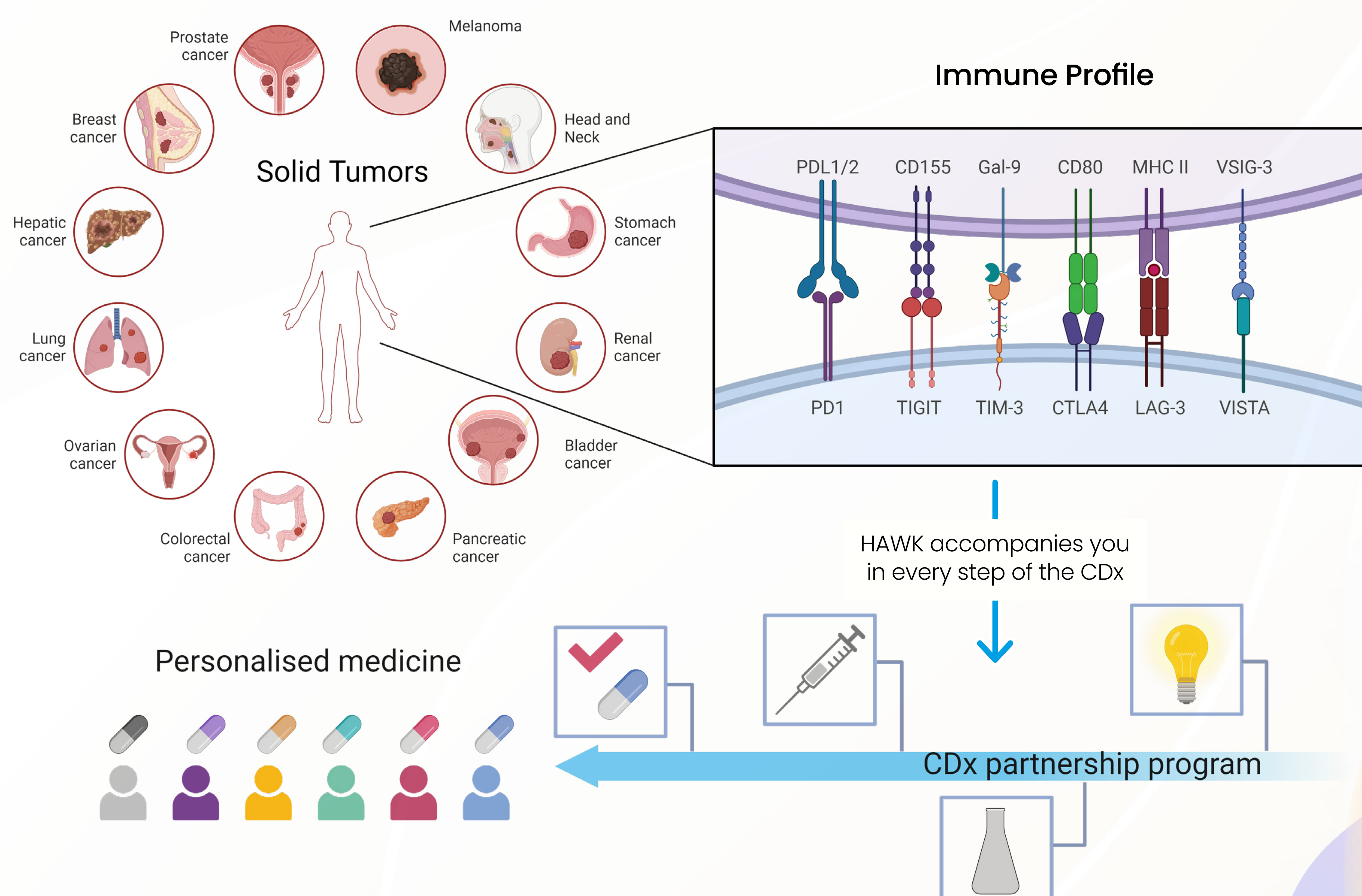
### Immune checkpoint pathways lack efficient predictive biomarkers:

- Low-response rates due to a lack of robust predictive biomarkers.
- The current gold-standard (PD-L1 TPS) fails to stratify patients for treatment.
- Unsustainable burden on patients and healthcare systems.

### QF-Pro® predicts patient response to anti-PD-1/PD-L1 therapies

- QF-Pro® identifies PD-1/PD-L1 interaction as a predictive biomarker.
- QF-Pro® effectively stratifies NSCLC patients to receive immune checkpoint inhibitors therapies.
- QF-Pro® spatially quantifies the functional states of proteins.

## Beyond PD-1/PD-L1: QF-Pro® empowers your research to discover new biomarkers with unmatched precision and efficiency.



## QF-Pro®

- Quantitative and versatile platform.
- Compatible with all FFPE samples and fixed cells.
- Multiplex technique for developing novel biomarker profiles.
- Groundbreaking Companion Diagnostics.

